



HIGH-SPEED  
DOORS

# MAViCLEAN®



A door to suit your needs



An ideal door for



## A flexible roll-up high-speed door for internal application, clean environments, clean rooms, grey rooms...

- MAVICLEAN® reduces air mass exchanges and maintains overpressures in controlled environments.
- The semi-rigid antistatic polyethylene guides effectively reduce dust retention and make cleaning process easier.
- The closed canopy guarantees optimum cleanliness by avoiding possible retention.
- Optimum tightness of uprights, thanks to watertight head guards.
- Opening of the uprights from the inside, facilitating access to the built-in control box for maintenance.
- The semi-rigid guide rails, combined with the curtain fitted with deformable shape-memory composite tubes, prevent the door from malfunctioning in case of impact.



### CLOSED canopy

- Guarantees optimum cleanliness
- Prevents potential retention areas



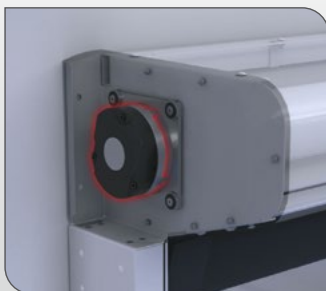
### Can be installed UNDER THE CEILING

- Eliminates upper retention areas

### CSTB N° BV04-126 Test report

Pressure in Pascal (Pa)	Permeability (M <sup>3</sup> /M <sup>2</sup> /H*)
10	3,84
15	4,40
20	5,50
25	8,80
30	10,70
35	11,60
40	12,10
45	13,00
50	14,50

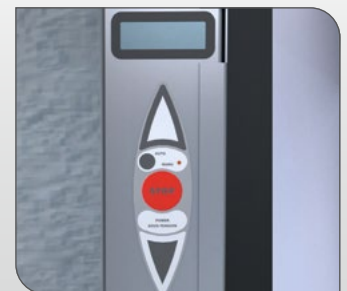
## FOCUS



**Fall arrest safety system** thanks to the brake on the opposite side the motor



**SAFETIME® system** for double safety and instant lifting



**Integrated control box** with front digital display



## 100% STAINLESS STEEL

### Version



- Entirely Structure in stainless steel, with stainless steel slides and covers

## IP66 WATERPROOF

### Integrated control box



### Worldwide exclusivity for MAVIFLEX to be discovered now

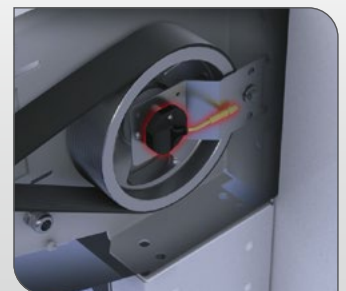
- Water resistance and moist environments
- Resistance to shocks and aggressive environments
- Certified by CETIM
- Integrated in the left upright
- No visible cable between the control box and motor
- APSAD-DI4 compliance



**Drive Belt** for greater reliability, energy savings and simpler maintenance



**Inverted covers** for opening inside of opening passage and an easy access to the integrated control box



**Electronic limit switch** for simplified, optimised adjustment from ground level

# Technical specifications

## Clear dimensions

- Standard version up to (w) 4,000 x (h) 4,000 mm

## Structure

- Self-supporting structure
- Corrosion-resistant material: galvanised steel with polyester epoxy powder coating
- Semi-rigid polyethylene guides
- Automatic canvas reinsertion in case of ejection
- Inverted covers, positioned inside of the uprights, for easy access to the control box and easy maintenance

## Option

- 304L or 316L stainless steel version

## Curtain

- C fire resistance
- 100% PVC-coated polyester weft
- Anti-UV and anti-mould treatment
- Shape memory composite tubes

## Options

- Row(s) of oblongs or vision panel
- MAVISION customisation® with logo, image or text
- A2/B fire resistance

## Operation

- Opening speed: up to 2 m/s and closing speed: 0.5 m/s

## Motorisation

- Integrated motor in the canopy
- Belt drive
- Electronic limit switch adjustment
- IP55 anti-corrosion stainless steel brake controlled by the electronic card
- Transmission shaft mounted on self-aligning ball bearings

## Safety

- SAFETIME® double safety system: detection system with 3 sensors, combined with automatic control of closing time

## Control box

- IP40 integrated control box
- Cycle counter

## Options

- IP65 integrated control box, for wet areas
- IP65 remote ABS control box, for wet areas
- PLC control

## M230 card

- Reprogrammable, scalable and customisable card
- Door management programme
- Integrated frequency inverter
- USB flash drive port for optimised maintenance

## Option

- T400\* card \* Chain drive operation

## Opening devices

- Manual: remote control, pull cords switch, push button, etc.
- Automatic: induction loop, cells, radar, etc.

## Lifting options

- Hand Crank at brake output
- Automatic by inverter\*\*
- Automatic by inverter for Emergency Exit \*\* \*\* M230 version only

## Electrical supply

- Standard
- Optionnal



# Technical dimensions

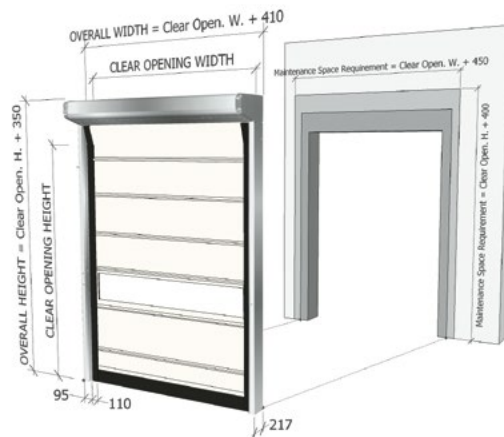
## Control box (M230):

- Control box power cable: 3G2.5<sup>2</sup> (minimum) 1 phase + ground + neutral
- Electrical supply: 230V single-phase
- Head circuit breaker: 16A curve C

## Three-phase option (T400):

- Control box power cable: 4G2.5<sup>2</sup> (minimum) 3 phases + ground
- Electrical supply: 400V three-phase
- Head circuit breaker: 16A curve C

Dimensions and specifications are subject to change without notice.



## Curtain options



Oblongs (375 x 230 mm)

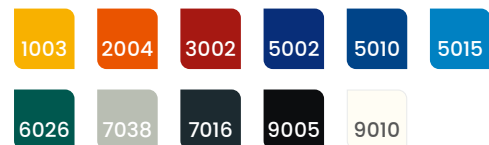


Vision panel (600 mm)



## Colours

Standard RAL for structure and curtain



Other colours available on request

Subject to supplier stocks. RAL colours may vary.